

No. 784,689.

PATENTED MAR. 14, 1905.

C. C. KORNS.

HOLDING DEVICE FOR SWITCH POINTS OR TONGUES.

APPLICATION FILED OCT. 5, 1903.

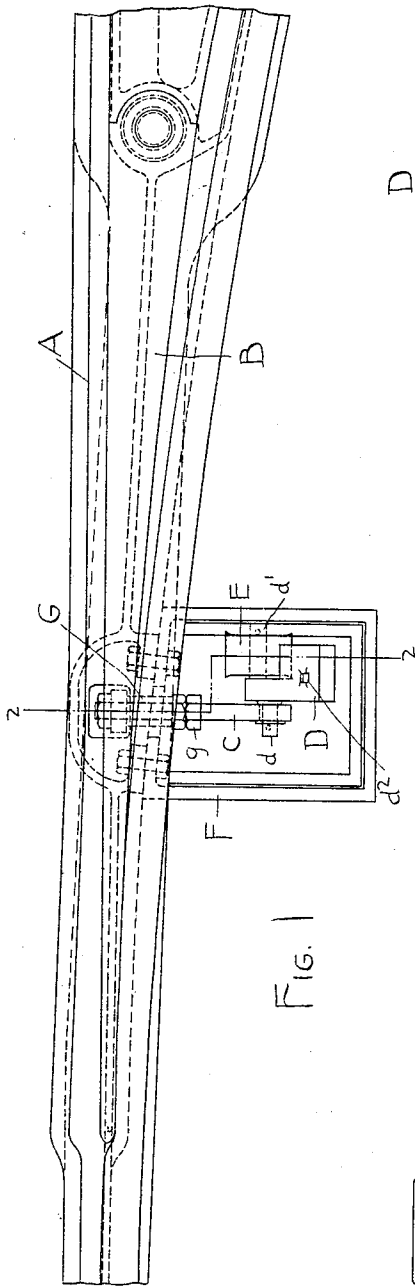


FIG. 1

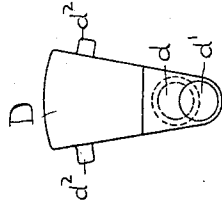


FIG. 4

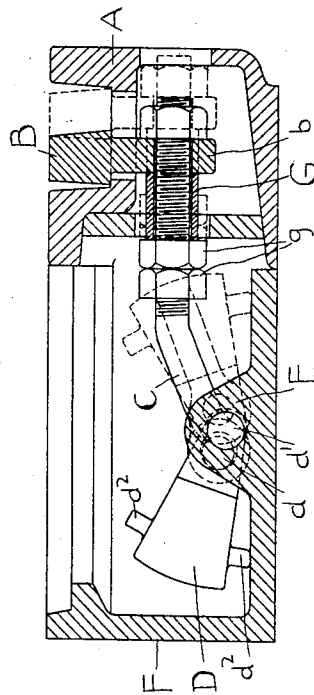


FIG. 2

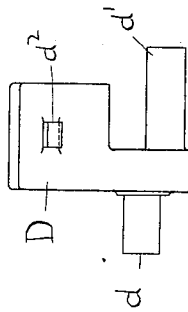


FIG. 3

WITNESSES:  
*A. A. B. M. Cauley,*  
*Loretto O'Connell*

INVENTOR  
*C. C. Korns,*  
 BY  
*Geo. H. Parmelee,*  
 his ATTORNEY.

# UNITED STATES PATENT OFFICE.

CLARENCE C. KORNS, OF JOHNSTOWN, PENNSYLVANIA, ASSIGNOR TO THE  
LORAIN STEEL COMPANY, A CORPORATION OF PENNSYLVANIA.

## HOLDING DEVICE FOR SWITCH POINTS OR TONGUES.

SPECIFICATION forming part of Letters Patent No. 784,689, dated March 14, 1905.

Application filed October 5, 1903. Serial No. 175,825.

*To all whom it may concern:*

Be it known that I, CLARENCE C. KORNS, of Johnstown, in the county of Cambria and State of Pennsylvania, have invented a new and useful Improvement in Holding Devices for Switch Points or Tongues, of which the following is a full, clear, and exact description, reference being had to the accompanying drawings, which form a part of this specification.

My invention has relation to holding devices for switch points or tongues, and is designed to provide a simple and effective device which can be readily attached to the tongue or point and which while it does not form a positive lock for the tongue, which can be thrown by means of the usual switch-bar, acts to prevent accidental displacement thereof.

With this object in view my invention consists in the novel construction, arrangement, and combination of parts, all as hereinafter described, and pointed out in the appended claim, reference being had to the accompanying drawings, in which—

Figure 1 is a plan view of a switch embodying my invention with the cover of the attached box or casing removed; Fig. 2, a section on the line 2 2 of Fig. 1, and Figs. 3 and 4 detail views of the weight.

The letter A designates the body portion or casting of the switch structure, and B the movable tongue or point. The latter is formed with a depending lug *b*, to which is secured one end portion of a laterally-projecting arm or rod C.

D is a small weight, having formed thereon or attached thereto the two studs *d* and *d'*. The downwardly-bent end portion of the arm

or rod C is pivotally engaged with the stud *d*, and the stud *d'* is journaled in a lug E of an inclosing box F.

When the switch is moved from one side to the other by means of the usual switch-bar, this weight is thrown over from one side to the other about the center *d'*, its holding effect being sufficient to prevent accidental movement of the tongue. To prevent the weight from falling too low, it is provided with the stop lugs or projections *d*<sup>2</sup>. A bushing or sleeve G is secured between the lug *b* and the jam-nuts *g* in order to give the tongue an operating connection with the rod or arm C in that direction.

I do not wish to limit myself to the precise construction and arrangement of parts herein shown and described, as changes may be made in the details thereof without departing from my invention as defined in and by the following claim.

Having thus described my invention, what I claim as new, and desire to secure by Letters Patent, is—

The combination with a movable switch tongue or point, of a pivoted weight, an arm connected to the tongue and pivoted to said weight eccentrically of the pivot of the latter, and means for always holding the weight in a position in which the pivotal connection of the said arm therewith is above its own pivot, whereby the throw of the switch-tongue will act to throw said weight.

In testimony whereof I affix my signature in presence of two witnesses.

CLARENCE C. KORNS.

Witnesses:

LORETTO O'CONNELL,  
H. W. SMITH.