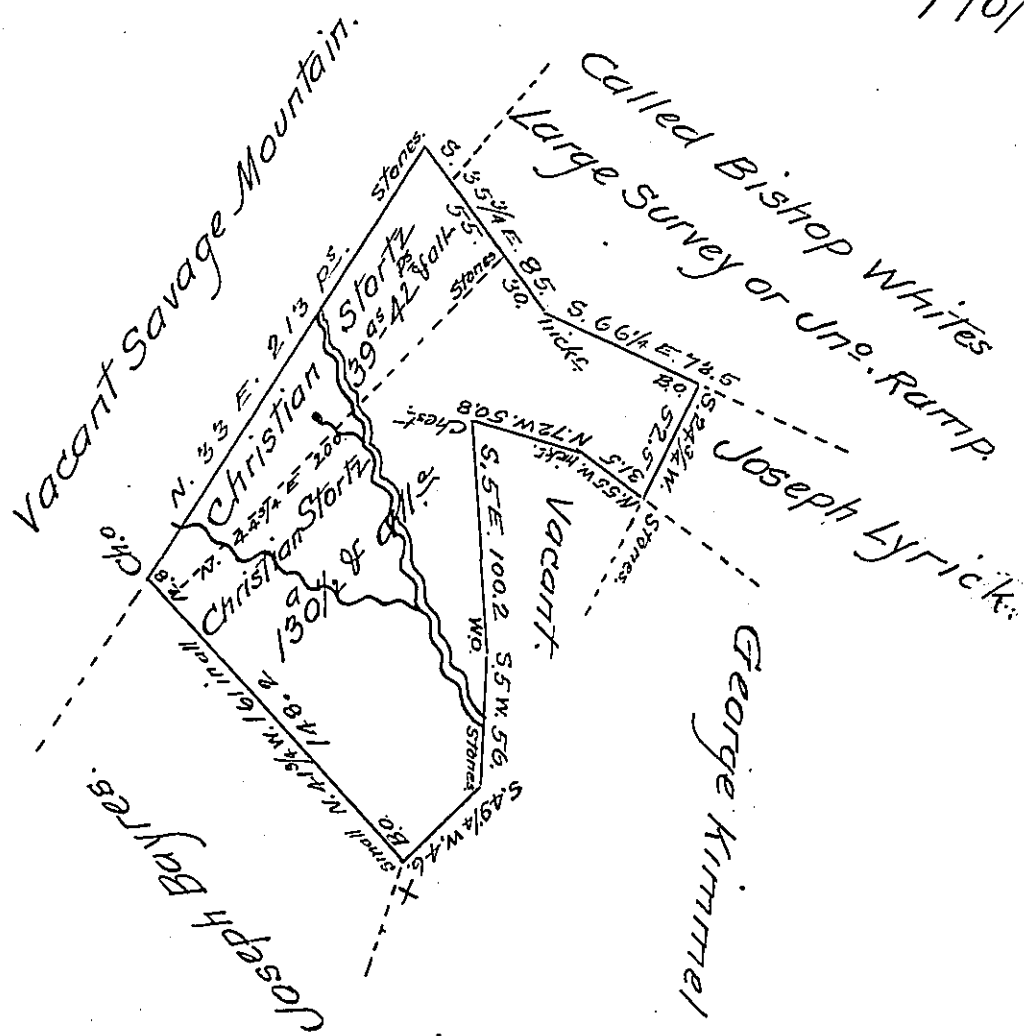


Containing in the whole
when the fractional parts
is rightly added together
 $170\frac{1}{4}$ & all w.

John McClean.



Christian Stortz the owner solicits the Honorable Board of Property to permit Patent to Issue for the above Two surveys in one Patent, he having first Surveyed the same agreeable to the outside lines with the consent of the neighbours. But their being an Excess in quantity had to take out an other Warrant the part of $130\frac{1}{2}$ has been returned to the Surveyor Generals Office p^r warrant dated the 30th day of May 1801 I also send a seperate return of the 39¹/₁₂ p.s. & allowance provided the Honorable ^{Board} will not Grant said Stortz his request

P^r John McClean

To Samuel Cochran Esquire }
Surveyor General }

IN TESTIMONY that the above is a copy of the original remaining on file in the Department of Internal Affairs of Pennsylvania, made conformably to an Act of Assembly approved the 16th day of February 1833, I have hereunto set my hand and caused the Seal of said Department to be affixed at Harrisburg, this eighth day of January 1907.

Samuel N. Brown
Secretary of Internal Affairs.